

**EURO GUARD
MAKES DURABLE PROMISES.**

EURO GUARD
HYSQUARE UPVC RAINWATER GUTTER

Vajra Plastic Industry Development Area Angamaly South, Champannur
Ernakulam, Kerala - 683573. www.euroguardhysquare.com



BRAND STORY

Euro Guard is India's first and largest manufacturer of uPVC rainwater gutters. It is also the first manufacturer of coloured half-round rainwater gutters matching the roof. Our innovation is inspired by the need for appealing and long-lasting rain gutters which advance the aesthetics of the elevation of a building. While we developed a unique, impressive shape for the gutter, we have also ensured that the product is technically infallible. Euro Guard has the highest water carrying capacity and strength (thickness and density) in all respective segments, be it Industrial rain gutter or Residential. Trust Euro Guard to stick by you through thick and thin.

INDIA'S FIRST AND LARGEST MANUFACTURER OF UPVC RAINWATER GUTTERS

OUR INSPIRATION FOR INNOVATION

The founders of Euro Guard were inspired by the problems that existing rainwater gutters had and set forth to developing a solution for it. It was then that, Euro Guard was formed through innovation and developed a uPVC rainwater gutter for the first time in India, giving it a proper shape, and longer life.

DESIGN WHICH BLENDS IN

Our gutters have a unique square-line design which perfectly blends in with the surface of wall.

QUALITY WITH INTELLIGENCE

Made from reliable and best quality pure virgin uPVC materials, delivering the best results.

TRUE POWER

Our gutters are 3 mm thick and is denser than any other gutter. It also has a special rib on both sides for endurance and stability. The clamps used for fixing the gutter are made of strong uPVC and specially designed to be rust-free and last longer.

BRAND JOURNEY

Vajra Plastic Industry was formed in the year 2005 and started manufacturing Euro Guard Rainwater Gutters in its production facility at Angamaly, Kerala- India. Priorly engaged in the business of machinery manufacturing for over 20 years, Euro Guard's expertise in the area of uPVC products manufacturing gained significant regard in the industry. Euro Guard's priority has always been innovations in water management especially rainwater. The pioneers of coloured round gutter manufacturing in the country, Euro Guard uPVC Rainwater Gutter provides a visual cover to the end of roof sheets and tiles with extra water-carrying capacity and superior thickness. In turn, it also delivers a neat finish to the buildings. It is manufactured with reinforcement ribs to prevent the gutter from flipping and water overflowing into the building.

Monsoons are happier with our Rainwater Gutters.



EURO GUARD
HY SQUARE UPVC RAINWATER GUTTER

FEATURES

- Built with the latest technology in rectilinear square European design for strength and durability
- The gutter can withstand heavy rain as it features 3MM thickness and duct capacity is more than any other type of gutters
- Unique rib on both sides for endurance
- Makes it more accessible for water flow and doesn't let dried leaves accumulate as the flow outlet has a larger circumference
- Made from reliable, pure uPVC products
- The clamps used for fixing the gutter is made of strong uPVC and specially designed to be rust-free and last longer
- Minimum life of 25 years with 10 years warranty



Highly Durable



Easy to Install



High Water
Carrying Capacity



Strong and Thick



Ideal for
all Weather
Conditions

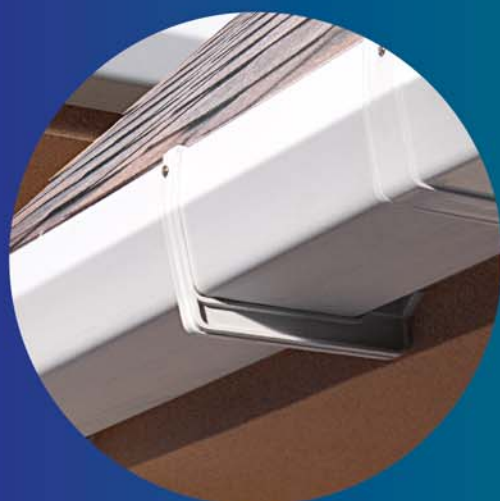
EURO GUARD FOR EVERY INDUSTRY.



Square Down
Take Pipe



Available in
Multiple Colours



uPVC with
GI Extension Clamp



Available in Industrial and
Residential Sizes



WHY EURO GUARD?

DESIGN WHICH BLENDS IN

Our gutters have a unique square-line design which perfectly blends in with the surface of the walls.

INSTALLATION MADE EASY

Our gutter system is so easy to install, that even an inexperienced fabricator can install it perfectly. The gutter consists of a retaining clip system in its fittings for faster and user-friendly installation.

MAINTENANCE FREE

We provide a Leaf Guard which helps to cover the gutter from any leaves or particles from falling inside it and blocking the drainage, which makes it maintenance free.

WEATHER PROOF

Euro Guard gutters withstand all types of weather, be it heavy rains, humidity, salty sea air, snow or heat. Making it suitable for any place, anytime.

SCRATCH RESISTANT

Our gutters and accessories come in a protective packaging in order to prevent any damages during transit and storage.



EURO GUARD
HYSQUARE UPVC RAINWATER GUTTER

PRODUCTS



**EURO GUARD
HYSQUARE RAINWATER
GUTTER**

Euro Guard rainwater gutter is the revolution in the roofing industry. It is made of uPVC material which has a life of minimum 25 years. The patented design of the gutter blends in perfectly to any type of building making it aesthetically pleasing and have many other advantages. It sits closer to the building than any other round or corrugated designed gutters thereby reducing chance of spillovers. The water carrying capacity cannot be matched in any other design. Colors of the gutter are precisely selected to match the popular roofing tiles/sheets. Extensive quality check is done since we provide zero defect promise.

Width	: 160 MM
Depth	: 100 MM
Length	: 3 METERS, 5 METERS
Thickness	: 3 MM (4 Kg/cm ² Gauge), Added rib for extra strength
Material	: UPVC (Unplasticized Poly Vinyl Chloride)
Colors	: Milky White, Brick Red, Blue, Dark Grey, Coffee Brown
Flow capacity	: 16 Liters/meter
Minimum life	: 25 years

EURO GUARD GUTTER FITTINGS



EURO GUARD CENTER JOINT

Center joint fitting is used to connect one gutter to another. Also called 'COUPLING'. It provides an edgy effect to the gutter. Also ensures the level of the gutter looks like a 'line' from point A to B. It locks the gutter inside the clip which prevents the edges from flipping out. Available in multiple colors to match your gutter color. Use silicone sealant inside the slot first and then slide the gutter inside it. Solvent cement is not required.

Width	: 160 MM
Depth	: 100 MM
Length	: 80 MM
Thickness	: 3 MM (4 Kg/cm ² Gauge), Added rib for extra strength
Material	: uPVC (Unplasticized Poly Vinyl Chloride)
Colors	: Milky White, Brick Red, Blue, Dark Grey, Coffee Brown
Installation	: Silicone inside slot and screw in slot to gutter.
Minimum life	: 25 years

EURO GUARD CENTER DROP

Center drop fitting is used to connect one gutter to another with an outlet for water. Also called 'RUNNING OUTLET'. Outlet size- 90 MM (3 inches) round. You could use Round X Square adaptor fitting to connect our HYSQUARE pipe as outlet for better aesthetics. It is made from best quality uPVC with glossy finish. It locks the gutter inside the clip which prevents the edges from flipping out. Available in multiple colors to match your gutter color. Use self-screws to fix the gutter. Use silicone sealant inside the slot first and then slide the gutter inside it.

Width	: 160 MM
Depth	: 100 MM
Length	: 230 MM
Outlet	: 90 MM (3 inches round)
Material	: uPVC (Unplasticized Poly Vinyl Chloride)
Colors	: Milky White, Brick Red, Blue, Dark Grey, Coffee Brown
Installation	: Silicone inside slot and screw in slot to gutter.
Minimum life	: 25 years



EURO GUARD CORNER/ ELBOW 90°

CORNER/ELBOW 90° fitting is used to turn the direction of the gutter in 90 degree. Lines running through the edges ensures strength along with aesthetics. It locks the gutter inside the clip which prevents the edges from flipping out. Available in multiple colors to match your gutter color. Use self-screws to fix the gutter. Use silicone sealant inside the slot first and then slide the gutter inside it. Solvent cement is not required.

Width	: 160 MM
Depth	: 100 MM
Length	: 95 MM EACH SIDE
Thickness	: 3 MM (4 Kg/cm ² Gauge), Added rib for extra strength
Material	: UPVC (Unplasticized Poly Vinyl Chloride)
Colors	: Milky White, Brick Red, Blue, Dark Grey, Coffee Brown
Installation	: Silicone inside slot and screw in slot to gutter.
Minimum life	: 25 years



EURO GUARD END DROP

END DROP fitting is used to outlet the water with a stopper Outlet size- 90 mm (3 inches) round. You could use Round X Square adaptor fitting to connect our HYSQUARE pipe as outlet for better aesthetics. It locks the gutter inside the clip which prevents the edges from flipping out. Available in multiple colors to match your gutter color. Use silicone sealant inside the slot first and then slide the gutter inside it. Solvent cement is not required.

Width:	: 60 MM
Depth	: 100 MM
Length	: 192 MM
Outlet	: 90 MM (3 inches round)
Material	: UPVC (Unplasticized Poly Vinyl Chloride)
Colors	: Milky White, Brick Red, Blue, Dark Grey, Coffee Brown
Installation	: Silicone inside slot and screw in slot to gutter.
Minimum life	: 25 years



EURO GUARD CORNER/ELBOW 45°

CORNER/ELBOW 45° fitting is used to turn the direction of the gutter in 45 degree. Lines running through the edges ensures strength along with aesthetics. It locks the gutter inside the clip which prevents the edges from flipping out. Available in multiple colors to match your gutter color. Use self-screws to fix the gutter. Use silicone sealant inside the slot first and then slide the gutter inside it. Solvent cement is not required.

Width	: 160 MM
Depth	: 100 MM
Length	: 180 MM
Thickness	: 3 MM (4 Kg/cm ² Gauge), Added rib for extra strength
Material	: UPVC (Unplasticized Poly Vinyl Chloride)
Colors	: Milky White, Brick Red, Blue, Dark Grey, Coffee Brown
Installation	: Silicone inside slot and screw in slot to gutter.
Minimum life	: 25 years



EURO GUARD CLAMP

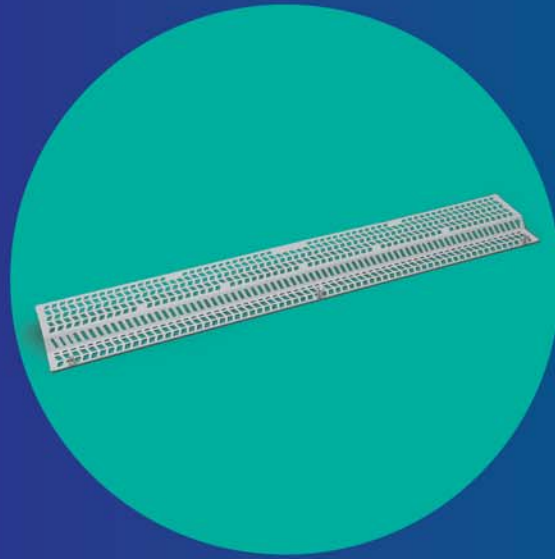
CLAMP is the most important fitting for any type of gutter. The stronger the clamp, better the life of the gutter. Also clamping styles differ from type of roofs. There are three types of clamps. 1. uPVC clamp 2. GI clamp and 3. uPVC clamp with GI handle. GI clamp and uPVC clamp with GI handle can be used for welding to metal surfaces. uPVC clamp can be screwed to concrete flat surfaces. Slope must be provided when installing the clamps to enable flow. It locks the gutter inside the clip which prevents the edges from flipping out. Available in multiple colors to match your gutter color. Maximum spacing between two clamps should not exceed 1 meter.

Width	: 160 MM
Depth	: 100 MM
Types	: uPVC, GI coated Iron, uPVC with GI extension with slope adjustment.
Thickness	: 3 MM (4 Kg/cm ² Gauge)
Material	: UPVC (Unplasticized Poly Vinyl Chloride)
Colors	: Milky White, Brick Red, Blue, Dark Grey, Coffee Brown
Installation	: Welding for GI clamp, Welding and Horizontal screw for uPVC with GI clamp, Vertical screw system with multiple slots for uPVC Clamp.
Minimum life	: 25 years



EURO GUARD LEAF GUARD

LEAF GUARD is a revolution in the gutter industry. The major issue faced by gutters was the leaves and other particles falling inside the gutter that blocks the water flow. Since it fell inside the duct of the gutter, it won't fly away. With LEAF GUARD a UPVC net is clipped to the gutter in leaf prone areas whereby the leaf will not go inside the gutter. This has enabled a maintenance free gutter system.

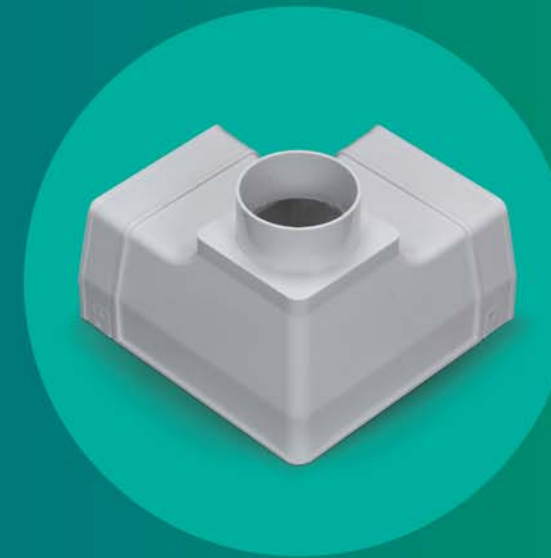


Width	: 160 MM
Depth	: 100 MM
Length	: 1 meter
Thickness	: 3 MM (4 Kg/cm ² Gauge)
Material	: UPVC (Unplasticized Poly Vinyl Chloride)
Colors	: Milky White
Installation	: Clip Lower side to inside (or wall direction) of gutter. And upper side screw to gutter outside
Minimum life	: 25 years

EURO GUARD END CAP

END CAP fitting is used to close a side of gutter. It locks the gutter inside the clip which prevents the edges from flipping out. Available in multiple colors to match your gutter color. Use silicone sealant inside the slot first and then slide the gutter inside it. Solvent cement is not required.

Width	: 160 MM
Depth	: 100 MM
Length	: 43 MM
Thickness	: 3 MM (4 Kg/cm ² Gauge)
Material	: UPVC (Unplasticized Poly Vinyl Chloride)
Colors	: Milky White, Brick Red, Blue, Dark Grey, Coffee Brown
Installation	: Silicone inside slot and screw in slot to gutter.
Minimum life	: 25 years



EURO GUARD CORNER DROP/ ELBOW DROP

CORNER DROP/ELBOW DROP fitting is used to turn the direction of the gutter in 90 degree along with an outlet. Lines running through the edges ensures strength along with aesthetics. It locks the gutter inside the clip which prevents the edges from flipping out. Outlet size is 90 MM (3 inches round). You could use Round X Square adaptor fitting to connect our HYSQUARE pipe as outlet for better aesthetics. Available in multiple colors to match your gutter color. Use self-screws to fix the gutter. Use silicone sealant inside the slot first and then slide the gutter inside it. Solvent cement is not required.

Width	: 160 MM
Depth	: 100 MM
Length	: 95 MM EACH SIDE
Outlet	: 90 MM (3 inches round)
Material	: UPVC (Unplasticized Poly Vinyl Chloride)
Colors	: Milky White, Brick Red, Blue, Dark Grey, Coffee Brown
Installation	: Silicone inside slot and screw in slot to gutter.
Minimum life	: 25 years
